

Stratton Playgroup

New Road, Stratton, Bude, Cornwall EX23 9AP

Telephone: 01288 356135 E-mail: [strattonplaygroup@hotmail.co.uk](mailto:strattonplaygroup@hotmail.co.uk)

Website: [www.strattonplaygroup.uk](http://www.strattonplaygroup.uk) Ofsted No.: 102959 Registered Charity No.: 1038250

## Newsletter - February 2026



## In this month's newsletter

*Our Learning this half term*

*Staff Profiles - Tracy and Edwina*

*Staff updates - Harri leaving*

*Staff training updates*

*Parenting advice and useful websites*

*Illnesses reminders*

*Spaces and sessions availability*

*Lending Library news*

*Reminder of session times*

*Updates*

*Term dates*

## **Our learning this half term**

The children have been really engaging in our learning and about the solar system.

Next week we will look at the book 'That's not my rocket'. The children will use mixed media to create their own rockets and take it around the environment looking at different materials to match the textures. We will use our senses to take part in a variety of different experiments.

The following week the children will take part in Children's mental health week by connecting with nature and listening to books about emotions. We will talk about people that are special to us and make valentines cards for people they love. On Tuesday the children will learn about how to stay safe online.

### **Tracy**



#### **Roles and Responsibilities**

Play and Engagement Support Worker

#### **How long have you worked at playgroup?**

Started January 2026

#### **Qualifications**

Bachelor of Science with Honours in Child & Adolescent Mental Health (1st class)

#### **What is your favourite thing about working in early years?**

I love working with children in their early years and watching them grow and develop before moving on to primary school.

### How Would you like to see playgroup grow and develop?

I would like to help support with speech, language and communication, by building supportive relationships with children, being available to support with small group and 1:1 activities.

### A little bit more about Tracy

Tracy has worked in mainstream education for many years, then moved over to two SEND schools supporting children with SEMH and autism.

Tracy has three daughters, a granddaughter and grandson. Tracy enjoys walking her dogs, swimming and travel.

### Edwina



### Roles and Responsibilities

To provide administrative / financial administrative, and day to day operational support to the Playgroup management & committee.

### About me

I am married to Dave and have 2 grown up boys - Joe & Sam, and 1 girl - Ruby, who is currently in her second year at university.

I enjoy reading, computers, family time, researching our family tree; and short breaks away in our motorhome, exploring new places.

### Have long have you worked at playgroup?

I have worked at Stratton Playgroup since July 2005.

### How would you like to see playgroup develop?

I have seen our playgroup grow enormously over the years, and long may it continue. Stratton Playgroup is an essential part of the community in Stratton & Bude, supporting local families and their children.

### Staff updates

We are sad to inform everyone that Harri has made the decision to leave playgroup. We will all really miss Harri.

Please see a message from Harri below:

*'Due to personal circumstances, I will no longer be working at Stratton Playgroup. It's been an absolute pleasure to have been a part of your children's journey. I will miss working in such a*

*great environment with a wonderful team and of course the fabulous children. I wish them all the very best'.*

### **Staff Training updates**

Kelly and Anna have attended Ofsted updates

Kelly has attended Mangers' meeting

Kelly have completed a range of Safeguarding training

## **Parenting advice and useful websites**

**BBC Tiny Happy People Parenting**

**Parenting downloads as Podcasts**

[BBC Sounds - CBeebies Parenting - Available Episodes](#)

[CBeebies Parenting Download - Series 1: 5. The art of negotiation: Tips for parents from an ex-hostage negotiator - BBC iPlayer](#)

**CeBeebies parenting website**

[Tiny Happy People - Tips and Advice for Mealtime with babies and toddlers](#)

**Too much screen time can have a real impact on children as they grow and develop.**

**Screen time can be seen as a 'digital dummy'**

*It can increase obesity in children*

*It can stop children from learning how to regulate their emotions*

*It can delay speech and language development*

*Phones away talk and play*

*It can impact how they sleep, or they can struggle to get to sleep*

**Please take a look at the websites below....**

[Phones Away - Talk and Play - Cornwall Council](#)

["Phones Away – Talk and Play": New campaign encourages parents to connect with their children - Cornwall Council](#)

**If you are needing support with potty training, please see the useful link below...**

[The Potty Training Guide - Starting Reception](#)

**National storytelling week is 2<sup>nd</sup> – 8<sup>th</sup> Feb**

Reading with children in their early years and beyond is really important. Small stories make a big difference.

[Early Years National Storytelling Week Project | National Literacy Trust](#)

### **Illness reminder**

If your child has had sickness or diarrhoea they **MUST** remain off playgroup for at least 48 hours after symptoms stop.

*If you child needs Calpol before coming to playgroup because they are feeling unwell, they are not well enough to be attending.*

### **Space/session availability**

We are currently full for this academic year and have a waiting list for spaces.



Spaces are already filling up from September 2026 so if you or someone you know would like to reserve a space please:

Visit our website: [strattonplaygroup.co.uk](http://strattonplaygroup.co.uk)

OR

Email: [strattonplaygroup@hotmail.co.uk](mailto:strattonplaygroup@hotmail.co.uk)

### Lending Library news

5 book Award to Junior

10 book Award goes to Olivia, Bodhi Logan

20 book Award to Ky

30 book Award to Harper and Isabelle

### Reminder of Session Times

**Early Start** - drop off can be from 8.15am but no later than 8.30am.

**Morning Session** - drop off 9:00am.

**End of morning session / lunch time** - pickups or drop offs (12.00 or 12.30).

**Afternoon pick up** - from 3:15pm until 3.30pm.

**Late fee charge** of £8 per hour (minimum of £4) if you are later than 10 minutes collecting.

### Updates

We are very proud of our website, where we display all our information; this will also be updated regularly with events and dates. This is available at: [www.strattonplaygroup.uk](http://www.strattonplaygroup.uk).

We also have Facebook and Instagram - please find us as "**Stratton Playgroup Bude**".

Monthly newsletters - these will be emailed to you each month.

At the end of each session a small description of the session will be written on the easel, outside - weather dependent.

### Term Dates

Half-Term	Mon 16 <sup>th</sup> Feb - Fri 20 <sup>th</sup> Feb
Last Day	Thurs 2 <sup>nd</sup> April
Start of Summer Term 2024	Mon 20 <sup>th</sup> April
Bank Holiday	Mon 4 <sup>th</sup> May
Half-Term	Mon 25 <sup>th</sup> May - Fri 29 <sup>th</sup> May
Bags to school collection	Tuesday 9 <sup>th</sup> June
Last Day	Weds 15 <sup>th</sup> July
Leavers Party (school starters only)	Thurs 16 <sup>th</sup> July AM

Other dates throughout the year will come up such as celebrations and events days.

Thank you for your time in reading this newsletter, if you have any questions please speak to a member of staff.

Kelly and all the team 😊



Kelly



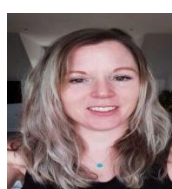
Anna



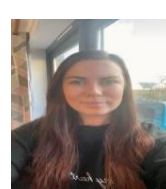
Sam



Roxy



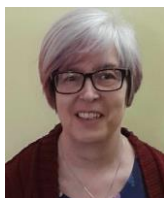
Kayleigh



Gemma



Liv



Edwina



Tracy